

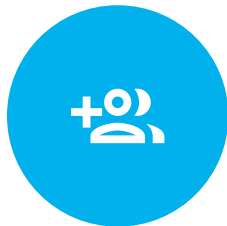
 **SAFECARE**

Unlock productivity and safeguard patient safety with acuity-based daily staffing.

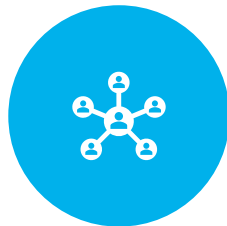
Effectively manage safe staffing by matching staffing levels to patient demand, avoiding both under and over staffing. Accredited by SNCT and MHOST* working in partnership with Imperial Innovations. Live visibility of staffing provides key staffing metrics to help operational staffing meetings make decisions around redeployments to help reduce the need for Bank or Agency staff.

**Patient Census**

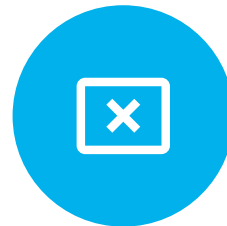
Ability to record patient censuses and levels of care. Required care hours (CHPPD) can also be calculated

**Staffing Level Visibility**

Provides visibility of staffing levels across the whole hospital, ideal for use in daily operational staffing meetings

**Redeployment**

Better enable Nurse Managers to flex and redeploy staff in line with patient demand

**Avoid Agency Use**

Redeploy staff safely with full sight of how this will impact services elsewhere

**Reporting**

Reporting of key staff metrics including planned, actual and required care hours to help plan staffing more safely and efficiently

SafeCare has been awarded an endorsement statement by The National Institute for Health and Care Excellence (NICE) in relation to its guidelines for Safe Staffing (SG1)



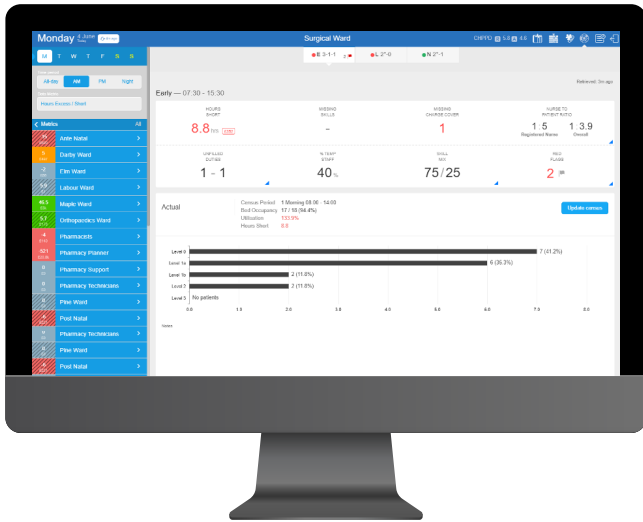
“Redeployment of substantive staff to avoid agency spend has contributed to significant reduction in temporary staffing spend for the organisation approximately £30,000 per month”

Adam Ruddock, Temporary Staffing Manager, North Tees and Hatlepool NHS Foundation Trust,

[Read the full Case Study at allocatesoftware.co.uk >](http://allocatesoftware.co.uk)

Real-time staff deployment based on patient demand and acuity for safer and more efficient staffing levels.

Used by over 200 NHS and Independent sector health and care organisations. Used in Acute, Mental Health and Community Inpatient, Private Hospitals, Hospices and Care Homes. SafeCare is empowering site managers, matrons, ward managers and nurses to flex resources as necessary to make the best possible use of substantive staff and safeguard patient safety.



Features

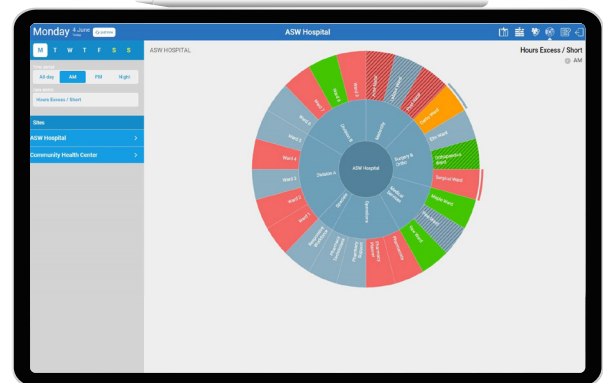
- Record a census of patient numbers, acuity & dependency – typically two or three times a day
- Record 'Red Flags' and notify key staff as they occur as required by the first safe staffing NICE guideline
- Redeploy staff safely with full visibility of impact
- Track attendance and view and record staff unavailability
- Request bank or agency cover if needed
- Reporting of staffing metrics and Safer Staffing report for NHSI

Benefits

- Quickly identify issues to enable Nurse Managers to flex and redeploy staff in line with patient demand
- See real time staffing status of all wards, services and locations in a single view
- View live staffing status by hours short/excess, missing skills, missing charge cover, skill mix and unfilled duties
- Reduce temporary personnel and avoid unnecessary agency use
- Report on planned, actual and required care hours to help review staffing levels
- See all staff rostered on a shift, including their skills and attendance status

The Safer Nursing Care Tool (SNCT) and Mental Health Optimal Staffing Tool (MHOST)* has been developed to help hospital staff measure patient acuity and / or dependency to inform evidence-based decision making on staffing requirements and workforce. It is this information that enables SafeCare to calculate the required care hours.

*SCNT is an additional charge to your SafeCare license



Integrates with HealthRoster 11 and BankStaff

Delivers Safer Care for Staff and Patients

REQUEST A DEMO TODAY

For more information please contact your **Allocate** Account Manager or visit www.allocatesoftware.co.uk