

 **ROSTERPERFORM11**

Access detailed reports that give you an analytical overview of your entire workforce.

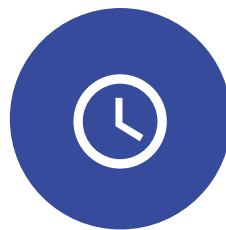
RosterPerform11 provides you with easily digestible data and reports of your organisation's workforce performance displayed over 100+ KPIs. Available for free with the Optima bundle, RosterPerform11 is the tool designed to give you the ability to use the data available in HealthRoster11 to measure and benchmark rostering performance across the entire organisation.

**Visible Workforce**

Gives managers a view of the whole workforce across the entire organisation.

**Enhanced Data Filter**

Access the data you need by filtering between dates, organisational level and more.

**Modern User-Interface**

RosterPerform11 has been rebuilt and redesigned with a new UI bringing it inline with HealthRoster11.

**Automated Reporting**

Set up reports to be sent with information you want, to who and when you want.



"It's much more user-friendly, much clearer and looks nicer. You get the detail that you want without all the extra stuff you don't want."

Andrea Hinton  
eRostering Specialist  
Lewisham and Greenwich NHS Trust



"We use the system to make sure that our rosters are fit for purpose, safe and provide what are patients need. The system shows us concern areas where we require more staffing, and see exactly where we are able to provide the staffing to support them from. This is really important as it provides that evidence for our business cases and justifies asking for extra funding and keeping funding."

Samantha Mitchleson  
Workforce Utilisation Lead  
University Hospitals of Leicester NHS Trust

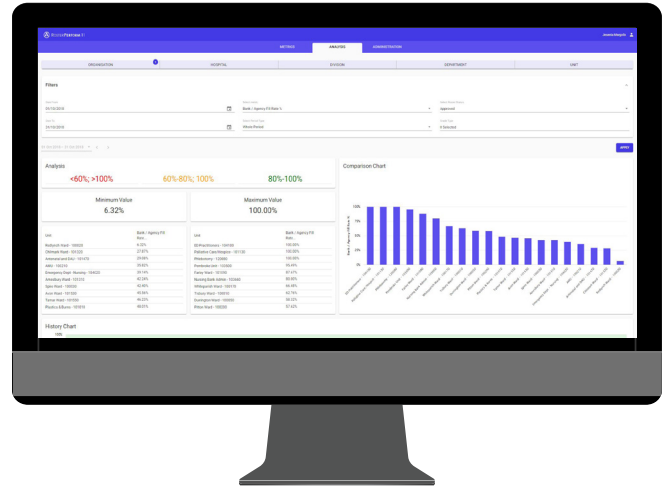
**190 Customers use RosterPerform to help with reporting.**

**Available for free to HealthRoster11 customers.**

Roster Perform11 is your workforce performance analysis and management tool. View and analyse 100+ performance metrics to analyse & manage past, present & future rosters and drive efficiencies across the organisation.

## Benefits

- **Rostering Analysis** - RosterPerform11 allows you to view your rostering performance, enabling you to measure efficiency, cost and safety.
- **Modern UI** – An updated, advanced UI ensures RosterPerform11 looks good, performs better and is easy to use.
- **Automated Reporting** – Schedule reports to be automatically sent to exactly who you want, by email.
- **Enhanced Filter Ability** – Allows users to filter information between any dates, grades types and wards, allowing for users to gain a clear view and specific data, on the exact part of their organisation they wish.
- **Key Metrics** - We have provided the key metrics that we know from over 3 decades of experience in the sector are necessary for healthcare organisations to analyse in order to operate efficiently.
- **Save Costs** – Through careful analysis of the data given in RosterPerform11, manage your work resources in a more efficient way.
- **Plan Ahead** - Analyse historical trends to plan ahead and prepare for quiet and busy periods.
- **Responsive Structure** – Rebuilt from the ground up, updating the system is much easier, allowing for RosterPerform11 to quickly respond to market factors.
- **Web Based System** – RosterPerform11 is web based, allowing for simple, easy access to the system.
- **Use on the Go** – Usable on desktop and tablets, use RosterPerform11 wherever is convenient for you.



## Features

- **Modern UI** – A modern, easy to use user interface.
- **Organisational Level Filter** – Filter data by searching for specific Organisations, Hospitals, Divisions, Departments or Units.
- **Advanced Date Filters** – Choose whatever date range you need, meaning you can easily create reports in line with other departments in the organisation.
- **Key Metrics** – Included are key metrics giving you quick access to the exact data you need to analyse your workforce resources effectively. Including Safety, Unavailability, Effectiveness, Fairness, Establishment and Cost.
- **Powerful Cloud Warehouse** – RosterPerform11 is built around a powerful data warehouse located in the cloud.
- **Complete Analysis** – In the analysis page view how metric values are distributed, see minimum and maximum values, thresholds for comparison and more.
- **History Chart** – View historical data in a digestible chart format for each roster period in the full year prior to the exact date you choose.

**A web based management solution that highlights staffing issues in the past, present and future.**

**REQUEST A DEMO TODAY**

For more information please contact your **Allocate Account Manager** or visit [www.allocatesoftware.co.uk](http://www.allocatesoftware.co.uk)

 **ALLOCATE**

+44 (0)20 7355 5555  
info@allocatesoftware.co.uk